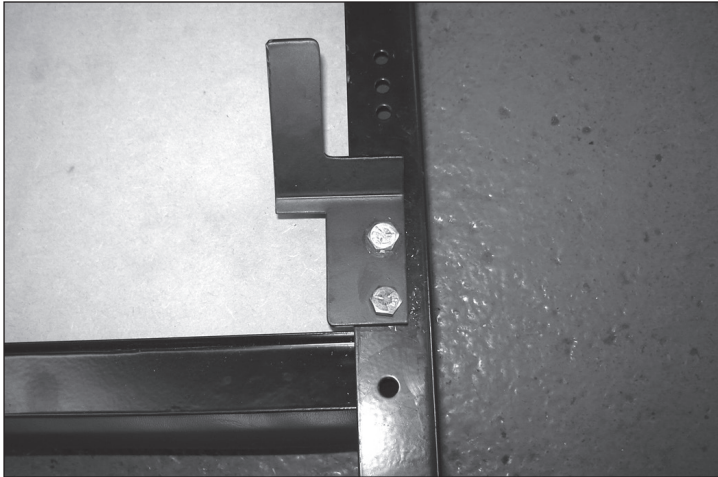
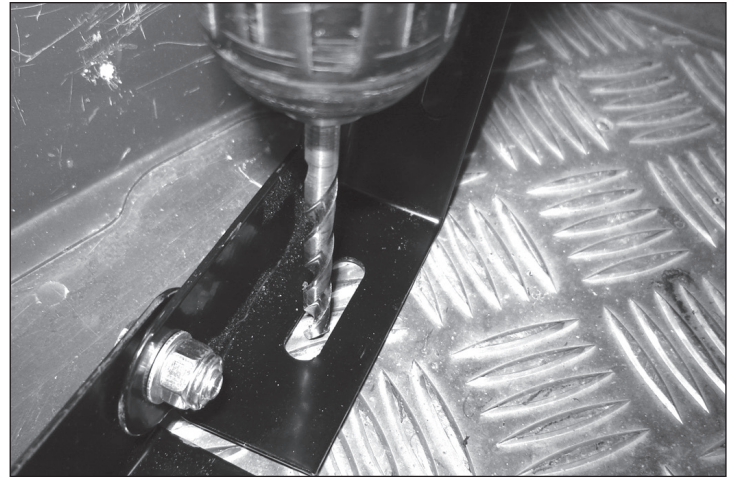


The quality parts for Land Rovers

Defender/Series Bench Seat



Loosely fix brackets to the back of the seat frame using nuts and bolts only.

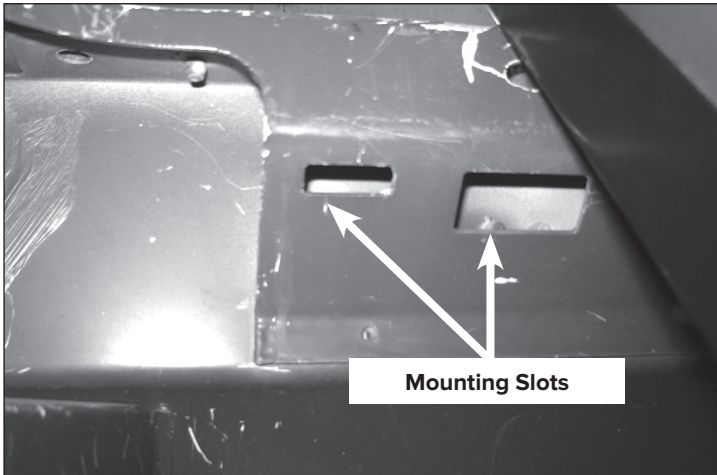


NOTE - Beware of electric cables when drilling holes

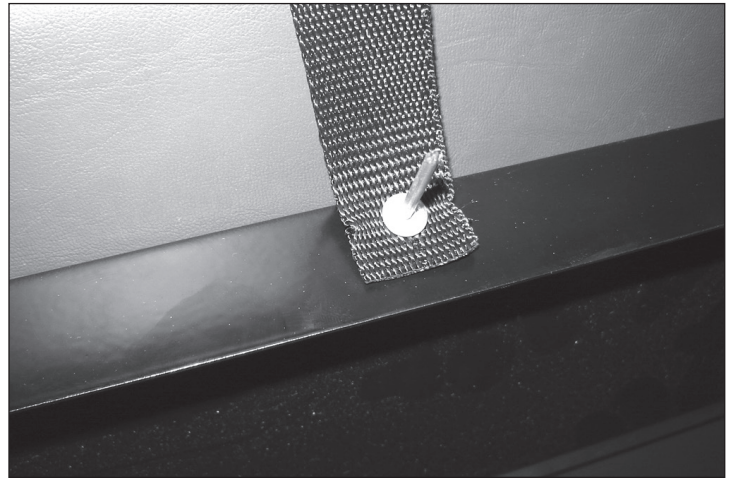
Hook seat back into mounting points at the top then slide the base backwards until the baseplate is flat with the vehicle body.

Drill a 6.5mm hole at each end and bolt down the seat assembly to the vehicle.

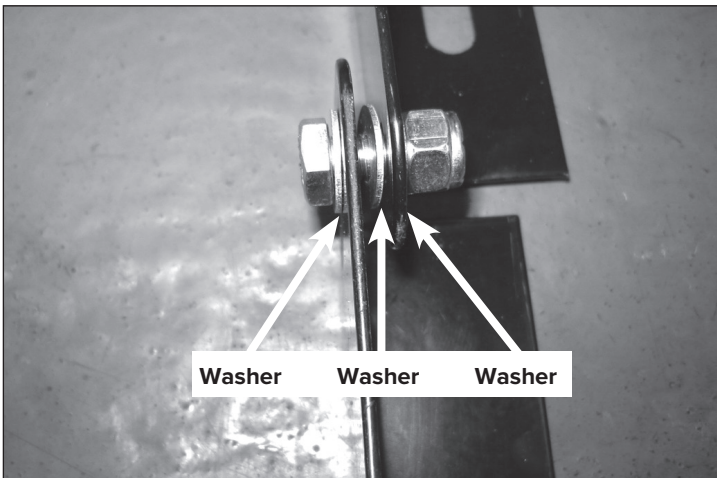
Bolt down with nuts/bolts provided.



Check the brackets align with the mounting slots on the vehicle, then tighten the bolts.



Using a small screwdriver make a hole in the end of the check strap and rivet the strap to the centre of the base frame.



Assemble the base frame to the back frame using nut/bolt and three washers as shown in picture.

Tighten up the bolts until the base just moves.

Tools required -

- > Spanners
- > Poprivet gun
- > 6.5mm drill bit
- > Small screwdriver



Britpart

The Grove, Craven Arms,
Shropshire, SY7 8DA United Kingdom
www.britpart.com

VR. 2

Disclaimer

These fitting instructions are intended for general guidance only. No responsibility will be accepted for damage to persons, property, equipment or vehicles caused during or arising from the fitting or using of this product. Fitting this item to your vehicle may constitute a vehicle modification and therefore we strongly recommend that you check the product complies with local laws and legislation and always inform the vehicle's insurance company accordingly.